



Visit Us At

EnclaveQuailCrossing.com



These exclusive luxury apartment residences are nestled within the suburban community of Friendswood, a charming and peaceful Texas country town adjacent to the nation's fourth largest city.

Spacious residence interiors are appointed with a full assortment of modern amenities. Southern colonial architecture has been tastefully surrounded by large open green spaces and jasmine cascading through oak, magnolia and cypress groves.

INTERIORS

- Deluxe White-on-White Appliances
- Frost-free Refrigerators, Ice Makers
- Built-in Microwave Ovens*
- Designer U-Shaped Kitchens
- Pickled Cabinetry
- Spacious Kitchen Pantries
- Serving Bars
- Full Size Washer/Dryer Connections
- High Speed Internet Connections
- Dual Data Jacks
- Built-in Bookshelves
- Mini-Blinds Covering Solar-Tinted Windows
- High Efficiency Air Conditioning, Heating & Insulation
- Luxurious Oval Roman Tubs*
- Linen Closets
- Spacious Walk-in Closets
- Decorative Tiled Entries
- Elegant Ten Foot Ceilings*
- Vaulted Ceilings*
- Energy Efficient Ceiling Fans
- Distinctive Bay Windows*
- Extra Large Private Porches
- Outdoor Storage Closets
- Scenic Park Views*

*Available in select homes

** Restrictions may apply

COMMUNITY AMENITIES

- Functional Contemporary Floorplans
- Controlled Access Gates
- Single Card Key Access to All Gates & Common Areas
- Reserved Covered Parking*
- Private Garages*
- Extra Outdoor Storage Spaces*
- Computer Equipped Resident Business Center with High Speed Internet Connection, Fax Maching & Copier
- Fully Equipped Fitness Center
- Two Clothes Care Centers
- Scenic Park Areas with Benches, Picnic Tables & Grills
- Two Sparkling Resort Style Swimming Pools with In-Pool Sun Ledge, Lap Lane, Gas Grills & Expansive Decks
- Relaxing Heated Spa
- Playground for Young Residents
- Fitness Trail
- Regulation Sand Volleyball Court
- Clubroom & Kitchen for Entertaining
- Car Care Facilities
- Acclaimed Clear Creek ISD Schools
- Ample Green Space
- Pet-Friendly Community**

(281) 648-2287

5000 Watkins Way, Friendswood, TX. 77546



FLOOR PLAN TYPES

A-The Vicksburg

1 Bedroom
1 Bath
798-810 Sq.Ft.*



B-The Cumberland



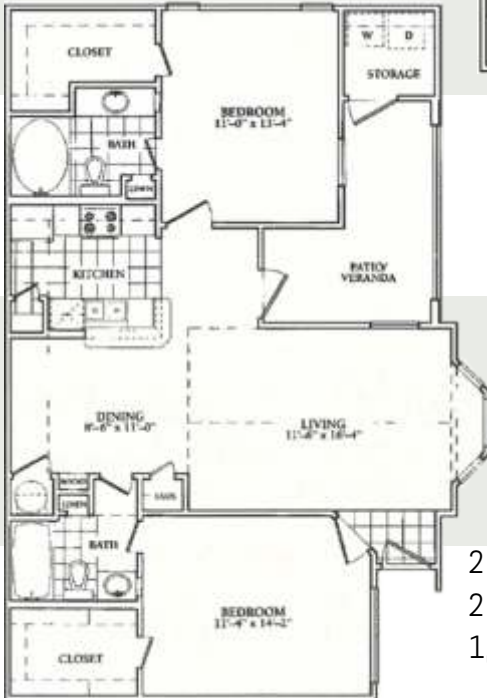
C-The St.Charles

2 Bedroom
2 Bath
1,069-1,081 Sq.Ft.*



D-The Jefferson

1 Bedroom
1 Bath
899-911 Sq.Ft.*



2 Bedroom
2 Bath
1,162-1,174 Sq.Ft.*

E-The Hermitage

3 Bedroom
2 Bath
1,263-1,251 Sq.Ft.*



Please call for pricing and square footage.